



Features

- Independent Pixel Heat Sink® providing unrivalled heat dissipation
- Replaceable LED light engine for easy maintenance
- Easily accessible high efficiency power supply
- Highly customizable lens distribution & color temperature
- 0-100% dimming (optional)
- DLC LED lighting rebate available
- IP65 protection



Optical Performance

lumens: 3000 lm - 30000 lm
 CCT: 4000K/5000K (2700K/3000K optional)
 Fixture Efficacy: 100 lm/w

Electrical Specifications

Wattage: 30W - 300W
 Power Input: 120-277VAC 50/60Hz
 Power Factor: ≥0.95
 THD < 15% at full load
 347/480 VAC (optional)

Test & Certifications

ETL Certified
 DLC Listed Product
 LM79, LM80 Tested
 RoHS Compliant (optional)



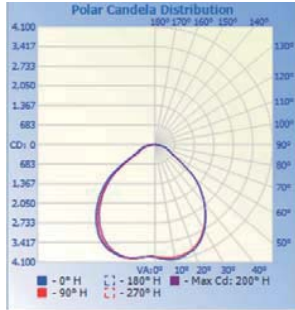
System Specifications

Model Number	Driving Current 400mA			Driving Current 600mA			Color Rendering Index
	Rated Wattage	CCT 4000K/5000K		Rated Wattage	CCT 4000K/5000K		
		Initial Lumens	System Efficacy		Initial Lumens	System Efficacy	
	W	lm	Lm/W	W	lm	Lm/W	
C0820-HB-XXXW	30	3000	100	50	5000	100	70
	40	4000	100	60	6000	100	70
	50	5000	100	80	8000	100	70
	70	7000	100	100	10000	100	70
	80	8000	100	120	12000	100	70
	90	9000	100	140	14000	100	70
	100	10000	100	160	16000	100	70
	120	12000	100	180	18000	100	70
	130	13000	100	200	20000	100	70
	140	14000	100	220	22000	100	70
	160	16000	100	240	24000	100	70
	170	17000	100	* 300	30000	100	70
	180	18000	100	400	40000	100	70
	200	20000	100	480	48000	100	70

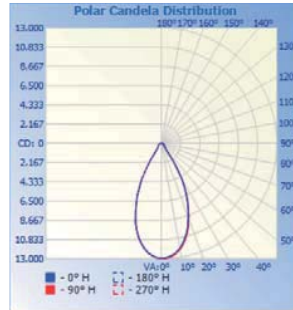
*Lifetime of 50,000 hours



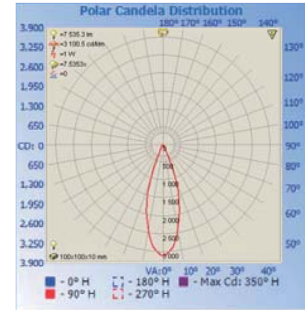
Illumination Diagrams



100°
Lens: N39

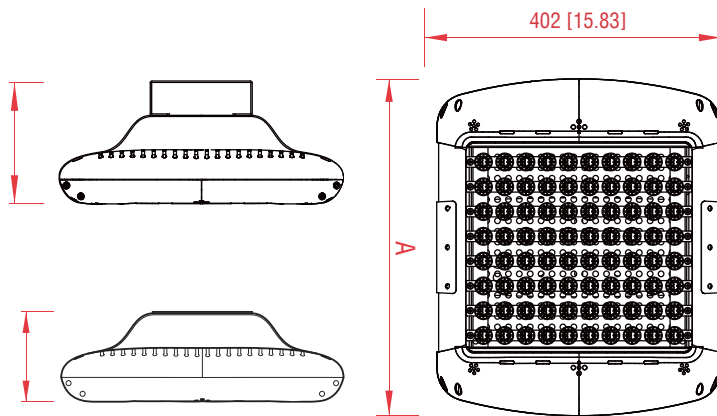


50°
Lens: N40



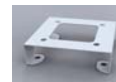
30°
Lens: N42

Mounting Options



Mounting Bracket

SM Type



HB Type



RC Type



Ordering Information

1. Product Series	2. Mounting	3. Wattage	4. CCT	5. Current	6. Lens Type	7. Finish	8. Accessories
C0820	HB - High bay	30W-200W (400 mA)	40K - 4000K	400 - 400mA	N39	WH - White	N - None
Area Lighting		50W-480W (600 mA)	50K - 5000K	600 - 600mA	N40	BR - Bronze	D - Dimming Control
			27K - 2700K(Optional)		N42	SL - Silver	
			30K - 3000K(Optional)			BL - Black	

Example: C0820 - HB - 120W - 50K - 400 - N39 - WH - N

1 2 3 4 5 6 7 8